



ELECTRONIC CONTROL

NPR-1025, NPR-1225, NPR-1425, NPR-2025

- Digital screen: precise control of temperature.
- Preset ironing speeds, not adjustable.

NPR-1425, NPR-2025 ECO-ENERGY

- Simple and user friendly with an **automatic mode**: automatic management of ironing speed according to the selected temperature.
- Digital speed and temperature display.



EFFICIENCY

- Acoustic comfort: 65 dB max.
- Minimum space requirement: space saving, suitable for small spaces.
- Ideal for processing small quantity of flat linen in facilities like restaurants, guest rooms, hostels.
- Speed control via potentiometer as an option.
- Heating plate with improved adaptation to different fabric thicknesses.



ROBUSTNESS

- Nomex quality coating: resistant to high temperatures (option, standard on ECO-ENERGY).
- Panels in grey Skinplate and stainless steel.
- Wooden feeding board.
- Industrial components, more durable.
- Gas spring located under the tray: less exposed to heat, no risk of leaks.
- Temperature probe screwed to the plate with thermal paste: no risk of damage.
- Klixon thermostat for greater safety and reliability.



OUTSTANDING FEATURES

- Large roll contact area with the linen.
- Roll lifting control by pedal or automatic roll lifting control by foot cell detection.
- Two available models:
 - **Standard**: roll with cotton polyester coating.
 - **Nomex**: roll with Nomex coating.
- **NPR ECO-ENERGY Models**:
 - Large roll contact area with the linen.
 - Mode of operation identical to a flatwork ironer: no roll lifting, more ergonomic.
 - Models equipped with Nomex belts, suction and variable speed inverter, more productivity.
 - Adjustable speed and temperature.



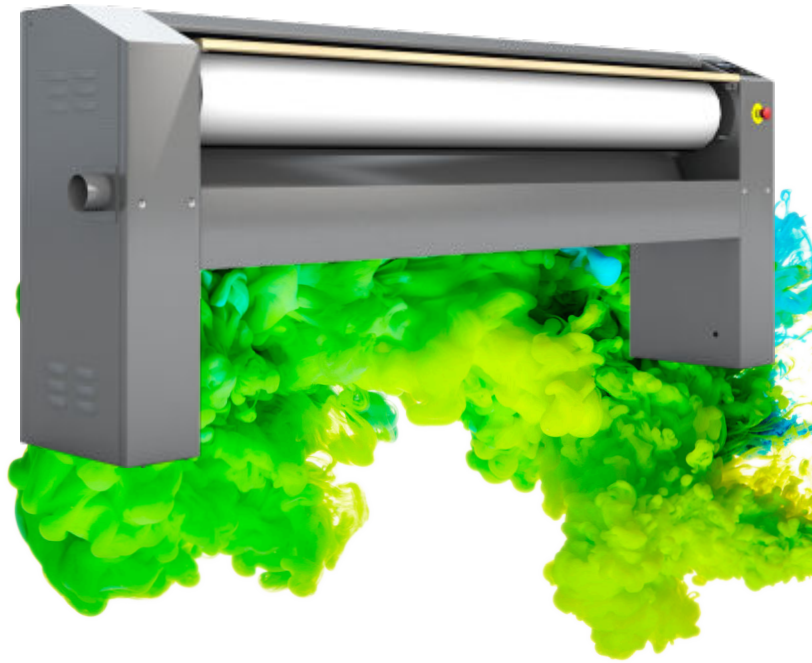
MAINTENANCE

- Easy installation: requires only an electrical connection.
- Easy access on both sides for maintenance.
- Quick and easy dismantling of bearings.
- Thermostat and probe accessible from the rear without removing the heating plate.



OTHERS

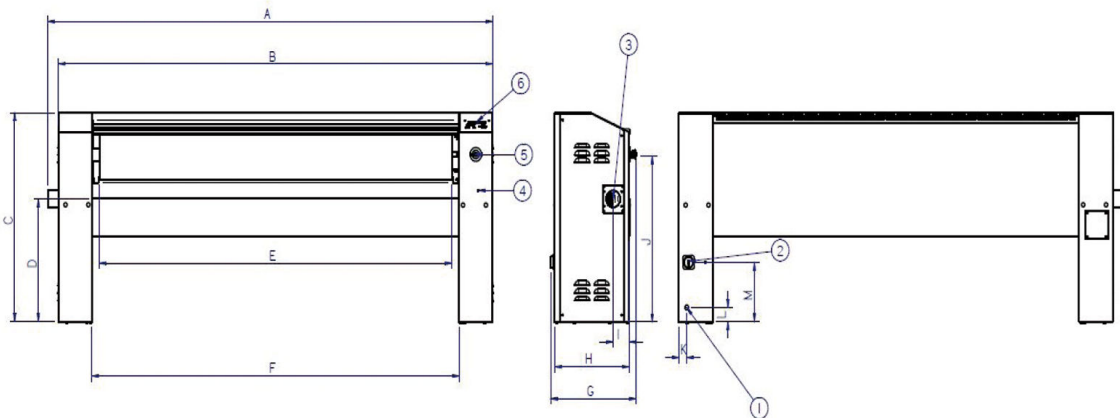
- Front feeding and return.
- Roll Ø 250 mm. Working widths: 1.000, 1.200, 1.400, 2.000mm.
- Electric heating.
- CE certification.



OPTIONS

- 230V 1~ + N 50Hz(except mod. 200 ECO-ENERGY)
- 400V 3~ + N + T 60Hz
- 440V 3~ (No N) 60Hz (marine)

GENERAL DETAILS	UNIT.	PR-1425 NOMEX ECO-ENERGY
Theoretical production: 20-25 humidity	Kg/h	40
	Lb/h	88,18
Roll Ø	mm	250
	inch	9,84
Working width	mm	1.400
	inch	55,12
Working speed	m/min	1.5-6
	ft/mn	4,9 - 19,6
Electronic control	-	YES
Chest motion	-	NO
POWER		
Heating power	Kw	7
Roll motor power	Kw	0.18
Fan motor power	Kw	0.12
Total electric power	Kw	7.3
CONNEXIONS		
Tension 230 V I + N + T	nº x mm²/A	-
	nº x AWG/A	-
Tension 230 V III + T	nº x mm²/A	4 x 6 / 20A
	nº x AWG/A	4 x 9 / 20A
Tension 400 V III + N + T	nº x mm²/A	5 x 4 / 16A
	nº x AWG/A	5 x 11 / 16A
DIMENSIONS		
Net / gross width	mm	1.923 / 1.890
	inch	76 / 74
Net / gross depth	mm	484 / 540
	inch	19 / 21
Net / gross height	mm	985 / 1.130
	inch	39 / 44
Net / gross weight	Kg	154 / 174
	Lb	340 / 384
Net / gross volume	m³	0,92 / 1,15
	ft³	32,38 / 40,73
OTHERS		
No. Fume outlet	Nº	1
Ø Fume outlet	mm	80
	inch	3,15
Air flow	m³/h	500
	cfm	294,29
Noise Level	dB	60



1. Electrical connection
2. Main switch
3. Vapour outlet
4. Crank handle
5. Emergency stop
6. BM control panel

	A	B	C	D	E	F	G	H	I	J	K	L	M
PR-1425 NOMEX ECO-ENERGY	1.922	1.862	985	610	1.400	1.480	484	423	91	791	45	75	287
PR-2025 NOMEX ECO-ENERGY	2.522	2.462	985	610	2.000	2.080	484	423	91	791	45	75	287