

TOUCH II

User friendly and totally programmable microprocessor with 7" touch screen.
 USB Connection. Online platform free of charge for programming, telemetry, data analysis...thanks to the IoT.
 Videos show on display: ads, instructions, (useful for coin laundry).
 37 languages.

OUTSTANDING FEATURES

Reversing drum action as standard.
 Stainless steel drum as standard.
 Frequency inverter as standard.

EFFICIENCY

DOUBLE FLOW - mixed axial-radial airflow.
 Big fluff filter.

VERSATILITY

Make to order - customisation.
 Wet Cleaning.
 OPL > Self-service - Standard OPL model easily trasformable to coin laundry uses.

CONNECTIVITY

IoT- **DOMUSCONNECT** standard.
 Management of laundries: OPL and COIN.
 Remote payment (coin-laundry).

ERGONOMICS

Drawer as fluff filter, stainless steel mesh.
 Biggest door diameters.

MAINTENANCE

Hinged control panel: easy and ergonomic access.
 Technical menu: statistics for technicians.

OTHERS

Grey skinplate outer casing, stainless steel look.
 SOFT DRY - new drum with stamped holes.
 COOL DOWN - anti-wrinkle at the end of the cycle.
 Heating options: electric or gas, except DTT2-22 XP only gas.
 CE approved



OPTIONS

- 400V 3~60Hz 11/14/18/22 XP
- CP KIT CENTRAL PAY STACK
- License IoT - DOMUSCONNECT
- EFFICIENT DRY - Humidity sensor for DTT2 (order 1 unit per column)
- Double doorglass (order 1 unit per column)
- Fire extinguisher SFEX STACK (order 1 unit per column)
- Tropicalized model (order 1 unit per column)
- Opposite door opening (order 1 unit per column)
- Dosing-spraying (1 unit x column)
- Fluff filter with grid 0,3 mm (standard in STACK is 0,6 mm)
- Back panel with air filter (STACK)
- Front and side panels in AISI 304 stainless steel AISI 304 DTT2-11 XP
- Front panel in AISI 304 stainless steel AISI 304 DTT2-11/14/18 XP
- Maritime wooden packing DTT2-11 XP
- 400V 3~ 50 Hz 11/14/18/22 XP
- 400V 3N 60 Hz 11/14/18/22 XP
- 230V 3~ 60 Hz 11/14/18/22 G XP
- 230V 3~ 60 Hz 11/14/18 E XP
- 440/480V 3~ 60 Hz 11/14/18/22 XP (marine)
- Several payment systems for self-service

| CAPACITY & DRUM | | UNIT. | DTT2-11 XP | |
|--|--|----------------|---------------|-------------------|
| Capacity 1/18 | | Kg | 11,7 x 2 | |
| | | lb | 25,7 x 2 | |
| Capacity 1/20 | | Kg | 10,5 x 2 | |
| | | lb | 23,1 x 2 | |
| Ø Drum | | mm | 750 | |
| | | inch | 29,5 | |
| Drum length | | mm | 475 | |
| | | inch | 18,70 | |
| Drum volume | | l | 210 | |
| | | cu ft | 7,41 | |
| Ø Door hole | | mm | 574 | |
| | | inch | 22,60 | |
| Door center height | | mm | 547 / 1522 | |
| | | inch | 21,54 / 59,92 | |
| Height from floor to bottom of door | | mm | 189 / 1164 | |
| | | inch | 7,32 / 45,83 | |
| ELECTRIC HEATING | | | | |
| Evaporation capacity | | L/h * | 13,5 x 2 | |
| | | US gallon/h * | 3,56 x 2 | |
| Hourly output | | Kg/h ** | 27 x 2 | |
| | | lb/h ** | 59,5 x 2 | |
| Installed heating power | | kW | 12 x 2 | |
| Installed electrical power | | kW | 25,34 | |
| Drum motor power | | kW | 0,37 x 2 | |
| GAS HEATING | | | | |
| Evaporation capacity (gas model) | | L/h | 15,4 x 2 | |
| | | US gallon/h | 4,05 x 2 | |
| Hourly output (gas model) | | Kg/h | 30,8 x 2 | |
| | | lb/h | 67,7 x 2 | |
| Installed gas heating power | | kcal/h *** | 17627 x 2 | |
| | | Btu/h *** | 69996 x 2 | |
| | | kW *** | 20,5 x 2 | |
| Installed electrical power | | kW | 1,34 | |
| Consumption of propane gas average (G31) | | Kg/h | 1,41 x 2 | |
| | | lb/h | 3,1 x 2 | |
| Instant natural gas consumption (G20) | | m³/h | 2,17 x 2 | |
| | | cfm | 1,28 x 2 | |
| Ø Gas inlet | | BSPP ISO 228-1 | 3/4" | |
| VENTILATION | | | | |
| Fan motor power | | kW | 0,25 x 2 | |
| Nominal air flow rate | | m³/h | 500 x 2 | |
| | | cfm | 294,28 x 2 | |
| Ø Fume exhaust | | mm | 200 | |
| | | inch | 7,87 | |
| HEAT EMISSION | | | | |
| Maximum total heat emission 10-8% (9-7%) | | kW | 3,3 | |
| | | Btu/h | 11198 | |
| Max. front heat emission 7-5% (4-2%) | | kW | 1,2 | |
| | | Btu/h | 4199 | |
| CONNECTIONS | | | E | G / S |
| Tension 230V - I + N + T | | Nº x mm² / A | - | 3 x 2,5 / 16A |
| Tension 230V - III + T | | Nº x mm² / A | 4 x 25 / 80A | 3 x 2,5 / 16 (5*) |
| Tension 400V - III + N + T | | Nº x mm² / A | 5 x 16 / 50A | 3 x 2,5 / 16 (6*) |
| NET DIMENSIONS / D. WITH PACKING | | | | |
| Net / gross width | | mm | 785 / 865 | |
| | | inch | 30,9 / 34,1 | |

| | | |
|-----------------------------------|------|-------------|
| Net / gross depth | mm | 1001 / 1084 |
| | inch | 39,4 / 42,7 |
| Net / gross height | mm | 1994 / 2126 |
| | inch | 78 / 83,7 |
| Net / gross weight | Kg | 284 / 295 |
| | lb | 626 / 650 |
| OTHERS | | |
| Max. sound level (at 1m in front) | dB | 64 |

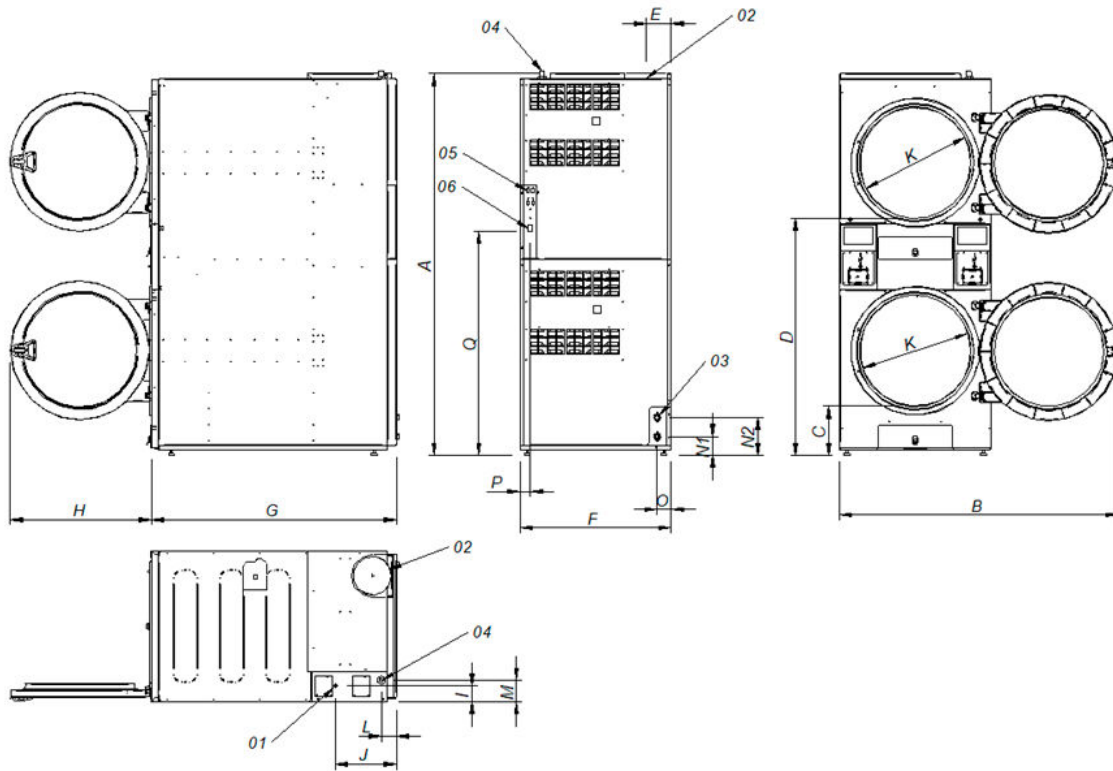
* Drying conditions: full load (1/20) of towels, drying temperature 90°C.

** Kg dry linen per hour. Drying conditions: full load (1/20) of towels, drying temperature 90°C.

*** Calculation of thermal power from PCI.

(5*) Connect 2 phases and earth.

(6*) Connect phase, neutral and earth.



- 01. Power supply
- 02 Fumes output Ø200
- 03 2 Sprinkler valves 3/4"
- 04 Gas inlet 3/4"
- 05 Ethernet connection (only touch control)
- 06 ON/OFF control rocker switch

| | | A | B | C | D | E | F | G | H | I | J | K | L | M | N1 | N2 | O | P | Q |
|------------|----|------|------|-----|------|-----|-----|------|-----|----|-----|-----|----|-----|----|-----|----|----|------|
| DTT2-11 XP | mm | 1980 | 1447 | 259 | 1234 | 131 | 785 | 1001 | 735 | 83 | 318 | 575 | 77 | 113 | 97 | 197 | 73 | 54 | 1163 |