

## TOUCH II

User friendly and totally programmable 4,3" microprocessor.  
 USB Connection. Online platform free of charge for programming, telemetry, data analysis...thanks to the IoT.  
 Videos show on display: ads, instructions, (useful for coin laundry).  
 37 languages.

## VERSATILITY

OPL <> COIN - Standard models can be programmed as OPL or coin laundry version, central pay, etc.  
 SINGLE <> STACKED - Models can be stacked on top of a washer or on another dryer.  
 Control panels can be assembled between both drums for better ergonomics.  
 Ideal for multiple solutions: hotels, hostels, campings, coin laundries, facility services (mops), gyms, etc.  
 Wet Cleaning features.

## OUTSTANDING FEATURES

Reduced drying times (less than 45 minutes).

## CONNECTIVITY

IoT - **DOMUSCONNECT** standard.  
 Management of laundries: OPL and COIN.  
 Remote payment.

## EFFICIENCY

Optimised airflow.  
 Axial airflow.  
 Wide fluff filter as drawer.  
 Efficient design.

## ROBUSTNESS

Outer casing in grey skinplate (white lacquered in HPDL model).  
 Robust aluminium door.  
 Industrial fan and powerful airflow.  
 Sturdy construction of the dryer structure and panels.

## OTHERS

Galvanized drum.  
 Electric and gas heated models.  
 Grey skinplate panels.  
 CE approved product



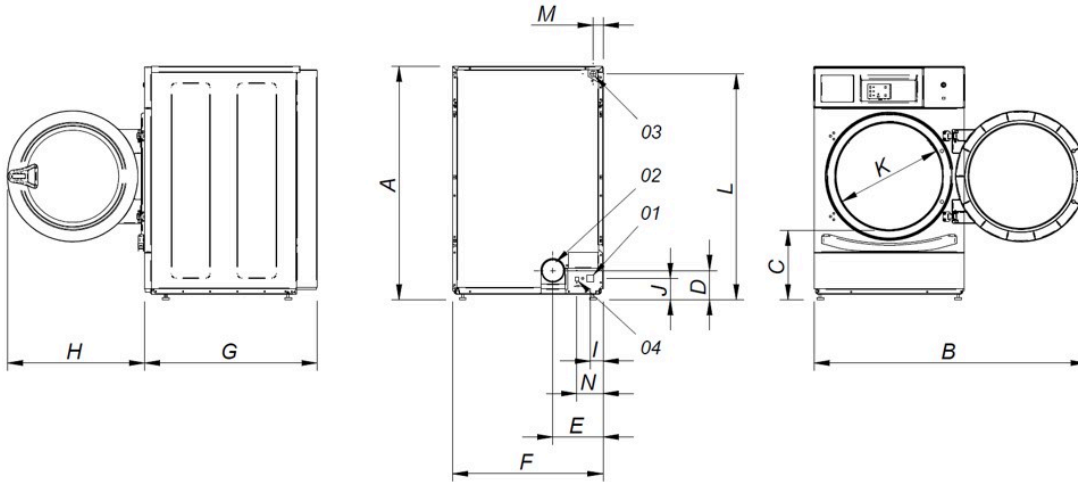
## OPTIONS

- License IoT - DOMUSCONNECT
- Natural gas heated tumble dryer
- Fire suppression system SFEX (only TOUCH II models)
- Plinth for better ergonomics HPD (except HPDL)
- Plinth for better ergonomics in stainless steel for HPD (except HPDL)
- Drum stainless steel AISI 304
- Outer casing stainless steel AISI 304
- Reverse door opening
- Control panel mounted below
- Tropicalized model (TOUCH II)
- EFFICIENT DRY humidity control (only TOUCH II models)
- Several payment systems for self-service
- 400V 3 / 230 I / 3 60 Hz No HPi
- 440-480V 3~ 60 Hz (marine)

| CAPACITY & DRUM                       |  | UNIT.          | HPD-10 TOUCH II   |                    |
|---------------------------------------|--|----------------|-------------------|--------------------|
| Capacity 1/18                         |  | Kg             | 11,1              |                    |
|                                       |  | lb             | 24,5              |                    |
| Capacity 1/20                         |  | Kg             | 10                |                    |
|                                       |  | lb             | 22                |                    |
| Ø Drum                                |  | mm             | 590               |                    |
|                                       |  | inch           | 23,2              |                    |
| Drum length                           |  | mm             | 690               |                    |
|                                       |  | inch           | 27,2              |                    |
| Drum volume                           |  | l              | 200               |                    |
|                                       |  | cu ft          | 7,06              |                    |
| Ø Door hole                           |  | mm             | 480               |                    |
|                                       |  | inch           | 18,9              |                    |
| Door center height                    |  | mm             | 554               |                    |
|                                       |  | inch           | 21,8              |                    |
| Height from floor to bottom of door   |  | mm             | 250               |                    |
|                                       |  | inch           | 9,84              |                    |
| ELECTRIC HEATING                      |  |                |                   |                    |
| Evaporation capacity                  |  | L/h            | 6,35              |                    |
|                                       |  | US gallon/h    | 1,68              |                    |
| Hourly output                         |  | Kg/h           | 12,5              |                    |
|                                       |  | lb/h           | 27,56             |                    |
| Installed heating power               |  | kW             | 4,5 / 6,75        |                    |
| Installed electrical power            |  | kW             | 4,92 / 7,17       |                    |
| GAS HEATING                           |  |                |                   |                    |
| Evaporation capacity (gas model)      |  | L/h            | 6,35              |                    |
|                                       |  | US gallon/h    | 1,68              |                    |
| Hourly output (gas model)             |  | Kg/h           | 12,5              |                    |
|                                       |  | lb/h           | 27,56             |                    |
| Installed gas heating power           |  | kcal/h         | 5761              |                    |
|                                       |  | Btu/h          | 22861,3           |                    |
| Installed gas heating power           |  | kW             | 6,70              |                    |
| Installed electrical power            |  | kW             | 0,42              |                    |
| Instant propane gas consumption (G31) |  | Kg/h           | 0,57              |                    |
|                                       |  | lb/h           | 1,26              |                    |
| Instant natural gas consumption (G20) |  | m³/h           | 0,71              |                    |
|                                       |  | cfm            | 0,42              |                    |
| Ø Gas inlet                           |  | BSPP ISO 228-1 | 1/2"              |                    |
| POWER AND VENTILATION                 |  |                |                   |                    |
| Drum motor power                      |  | kW             | 0,37 (2)          |                    |
| Fan motor power                       |  | kW             | 0,37(2)           |                    |
| Nominal air flow rate                 |  | m³/h           | 300               |                    |
|                                       |  | cfm            | 177               |                    |
| Ø Fume exhaust                        |  | mm             | 100               |                    |
|                                       |  | inch           | 3,94              |                    |
| HEAT EMISSION                         |  |                |                   |                    |
| Maximum total heat emission           |  | kW             | 0,5               |                    |
|                                       |  | Btu/h          | 1536              |                    |
| Max. front heat emission              |  | kW             | 0,3               |                    |
|                                       |  | Btu/h          | 1075              |                    |
| CONNECTIONS                           |  |                |                   |                    |
| Tension 230V - I + N + T              |  | Nº x mm² / A   | E<br>3 x 10 / 40A | G<br>3 x 1,5 / 10A |
| Tension 230V - III + T                |  | Nº x mm² / A   | 4 x 4 / 25A       | 3 x 1,5 / 10A (3)  |
| Tension 400V - III + N + T            |  | Nº x mm² / A   | 5 x 2,5 / 16A     | 3 x 1,5 / 10A (4)  |
| NET DIMENSIONS / D. WITH PACKING      |  |                |                   |                    |
| Net / gross width                     |  | mm             | 680 / 710         |                    |
|                                       |  | inch           | 26,8 / 28         |                    |

|                    |      |               |
|--------------------|------|---------------|
| Net / gross depth  | mm   | 775 / 832     |
|                    | inch | 30,5 / 32,8   |
| Net / gross height | mm   | 1.056 / 1.141 |
|                    | inch | 41,6 / 44,9   |
| Net / gross weight | Kg   | 93 / 111      |
|                    | lb   | 204 / 245     |
| <b>OTHERS</b>      |      |               |
| Sound level        | dB   | 62            |

- (1) Configurable via a terminal block system.
- (2) It's a single motor for both the drum and fan.
- (3) Connect two phases and ground.
- (4) Connect phase, neutral, and ground.



- 01 Power supply
- 02 Fumes output Ø 100
- 03 Gas inlet 1/2"
- 04 Ethernet connection (only TOUCH control)

|        | A     | B     | C   | D   | E   | F   | G   | H   | I  | J  | K   | L     | M  | N   |
|--------|-------|-------|-----|-----|-----|-----|-----|-----|----|----|-----|-------|----|-----|
| HPD-8  | 1.056 | 1.227 | 320 | 140 | 226 | 680 | 722 | 615 | 57 | 91 | 480 | 1.015 | 50 | 118 |
| HPD-10 | 1.056 | 1.227 | 320 | 140 | 226 | 680 | 775 | 615 | 57 | 91 | 480 | 1.015 | 50 | 118 |