

## TOUCH II

User friendly and totally programmable microprocessor with 7" touch screen.  
 USB Connection. Online platform free of charge for programming, telemetry, data analysis...thanks to the IoT.  
 Videos show on display: ads, instructions, (useful for coin laundry).  
 37 languages.

## OUTSTANDING FEATURES

Reversing drum action as standard.  
 Stainless steel drum as standard.  
 Frequency inverter as standard.

## EFFICIENCY

DOUBLE FLOW - mixed axial-radial airflow.  
 Big fluff filter.

## VERSATILITY

Make to order - customisation.  
 Wet Cleaning.  
 OPL > Self-service - Standard OPL model easily trasformable to coin laundry uses.

## CONNECTIVITY

IoT- **DOMUSCONNECT** standard.  
 Management of laundries: OPL and COIN.  
 Remote payment (coin-laundry).

## ERGONOMICS

Drawer as fluff filter, stainless steel mesh.  
 Biggest door diameters.

## MAINTENANCE

Hinged control panel: easy and ergonomic access.  
 Technical menu: statistics for technicians.

## OTHERS

Grey skinplate outer casing, stainless steel look.  
 SOFT DRY - new drum with stamped holes.  
 COOL DOWN - anti-wrinkle at the end of the cycle.  
 Heating options: electric or gas, except DTT2-22 only gas.  
 CE approved

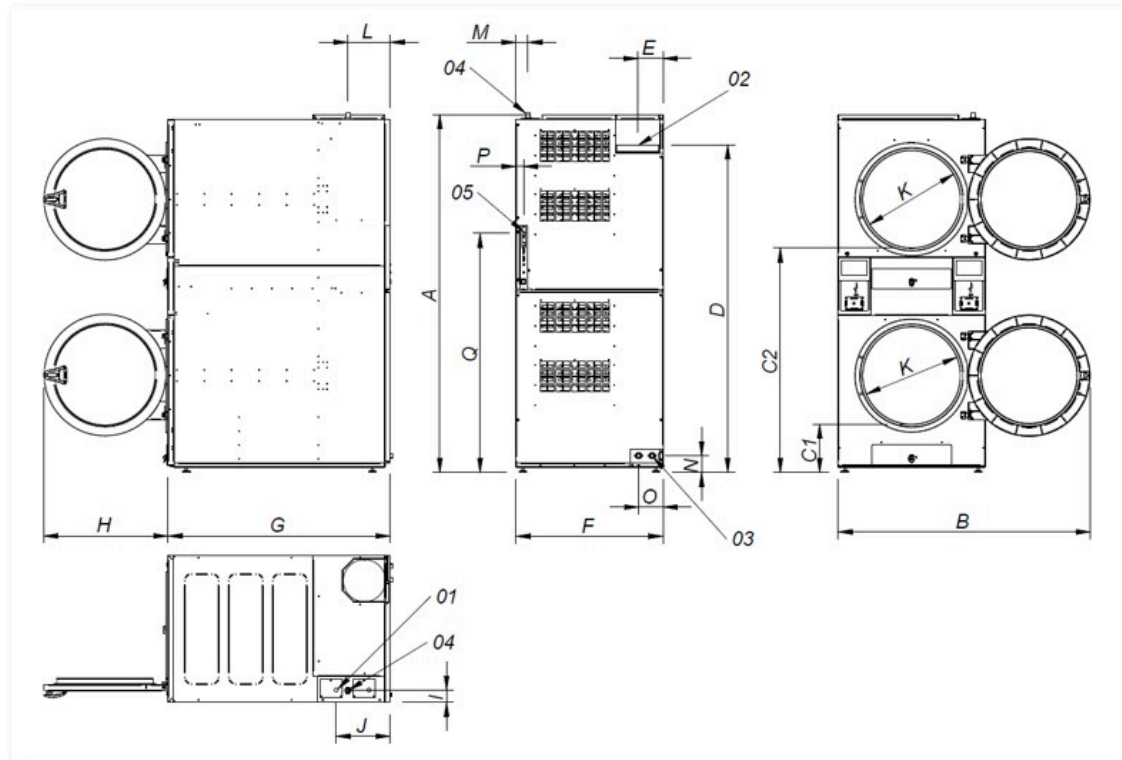


## OPTIONS

- License IoT - DOMUSCONNECT
- Natural gas heated tumble dryer
- EFFICIENT DRY for STACK (order 1 unit per column)
- Double doorglass (order 1 unit per column)
- Fire extinguisher SFEX STACK (order 1 unit per column)
- Tropicalized model (order 1 unit per column)
- Opposite door opening (order 1 unit per column)
- Dosing-spraying of perfume (1 unit x column)
- Fluff filter with grid 0,3 mm (standard in STACK is 0,6 mm)
- Stainless steel front and side panels DTT2-22
- Back panel with air filter (STACK)
- Front panel in stainless steel DTT2-22
- Maritime wooden packing DTT2-22
- 400V III 60Hz 11/14/18/22kg
- 440V/480V III 60Hz 11/14/18/22kg (maritime)
- Several payment systems for self-service

CAPACITY & DRUM	UNIT.	DTT2-22	
Capacity 1/18	Kg	24,3 x2	
	lb	53,6 x2	
Capacity 1/20	Kg	21,9 x2	
	lb	48,3 x2	
Ø Drum	mm	835	
	inch	32,87	
Drum length	mm	800	
	inch	31,50	
Drum volume	l	440	
	cu ft	15,54	
Ø Door hole	mm	575	
	inch	22,64	
Door center height	mm	547 / 1.618	
	inch	22,60 / 63,70	
Height from floor to bottom of door	mm	286 / 1.330	
	inch	11,26 / 52,36	
ELECTRIC HEATING			
Evaporation capacity	L/h	-	
	US gallon/h	-	
Hourly output	Kg/h	-	
	lb/h	-	
Installed heating power	kW	-	
Installed electrical power	kW	-	
Drum motor power	kW	0,37 x2	
GAS HEATING			
Evaporation capacity (gas model)	L/h	44 x2	
	US gallon/h	11,624 x2	
Hourly output (gas model)	Kg/h	88 x2	
	lb/h	194 x2	
Installed gas heating power	kcal/h	26139 x2	
	Btu/h	103658,5 x2	
Installed gas heating power	kW	30,4 x2	
Installed electrical power	kW	1,94	
Instant propane gas consumption (G31)	Kg/h	2,61 x2	
	lb/h	5,75 x2	
Instant natural gas consumption (G20)	m <sup>3</sup> /h	3,22 x2	
	cfm	1,89 x2	
Ø Gas inlet	BSPP ISO 228-1	3/4"	
VENTILATION			
Fan motor power	kW	0,55 x2	
Nominal air flow rate	m <sup>3</sup> /h	900 x2	
	cfm	529,72 x2	
Ø Fume exhaust	mm	250 x2	
	inch	9,84 x2	
HEAT EMISSION			
Maximum total heat emission	kW	2,6	
	Btu/h	8876,8	
Max. front heat emission	kW	1,9	
	Btu/h	6486,9	
CONNECTIONS		E	G / S
Tension 230V - I + N + T	Nº x mm <sup>2</sup> / A	-	3 x 2,5 / 20A
Tension 230V - III + T	Nº x mm <sup>2</sup> / A	-	3 x 2,5 / 20A (1*)
Tension 400V - III + N + T	Nº x mm <sup>2</sup> / A	-	3 x 2,5 / 20A (2*)
NET DIMENSIONS / D. WITH PACKING			
Net / gross width	mm	870 / 950	
	inch	34,25 / 37,40	

Net / gross depth	mm	1.312 / 1.395
	inch	51,65 / 54,92
Net / gross height	mm	2.118 / 2.250
	inch	83,39 / 88,58
Net / gross weight	Kg	373,5 / 388,5
	lb	823,43 / 856,50
<b>OTHERS</b>		
Sound level	dB	69



- 01 Power supply
- 02 Fumes output Ø 250
- 03 2 sprinkler valves 3/4"
- 04 Gas inlet 3/4"
- 05 Ethernet connection (only TOUCH control)

	A	B	C1	C2	D	E	F	G	H	I	J	K	L	M	N	O	P	Q
DTT2-22	2.118	1.490	286	1.330	1.940	149	870	1.312	735	73	320	575	250	70	100	145	45	1.416