

VERSATILITY

OPL <> COIN: Standard models can be programmed as OPL or coin laundry version, central pay, etc.
 SINGLE <> STACKED: Models can be stacked on top of a washer or on another dryer.
 Control panels can be assembled between both drums for better ergonomics.
 Ideal for multiple solutions: hotels, hostels, campings, coin laundries, facility services (mops), gyms, etc.
 New gas heated models.

OUTSTANDING FEATURES

M PROGRAMMER: selection of time and temperature, user friendly and versatile (OPL or coin laundry version).
 Reduced drying times (less than 45 minutes).
 6,75 kw heating, option 4,5 kW (4,5 kW in Essential Model).

EFFICIENCY

Optimised airflow.
 Wide fluff filter as drawer.
 Efficient design.

ROBUSTNESS

White lacquered steel panels.
 Robust aluminium big door.
 Drawer as fluff filter (not in the door but as a specific drawer).
 Industrial fan and powerful airflow.
 Sturdy construction of the dryer structure and panels.

OTHERS

Galvanized drum.
 Electric and gas heated models.
 Grey skinplate panels.
 CE approved product



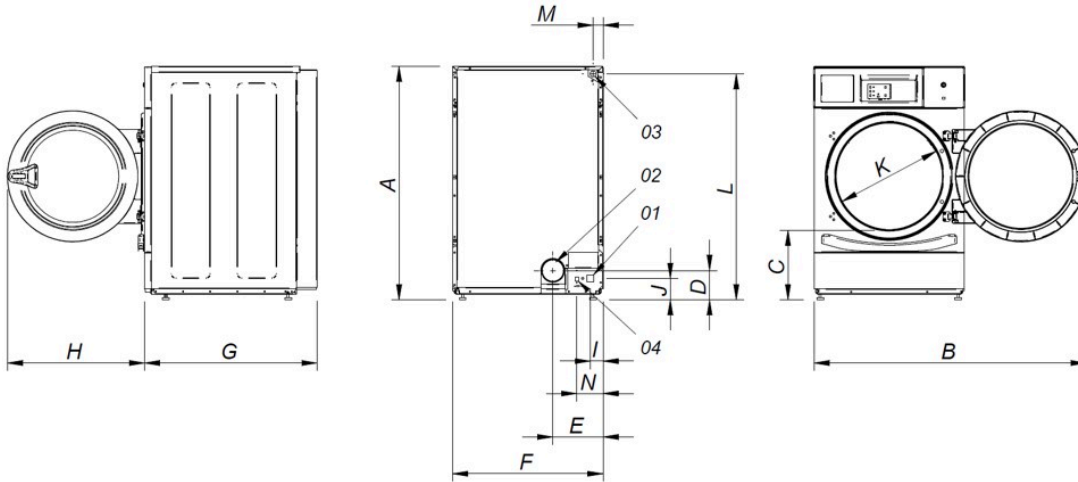
OPTIONS

- Natural gas heated tumble dryer
- Plinth for better ergonomics HPD (except HPDL)
- Plinth for better ergonomics in stainless steel for HPD (except HPDL)
- Drum stainless steel AISI 304
- Outer casing stainless steel AISI 304
- Reverse door opening
- Control panel mounted below
- Several payment systems for self-service
- 400V 3 / 230 I / 3 60 Hz No HPi
- 440-480V 3~ 60 Hz (marine)

| CAPACITY & DRUM | | UNIT. | HPD-8 M | |
|---------------------------------------|--|--------------------------|-------------------|--------------------|
| Capacity 1/18 | | Kg | 8,9 | |
| | | lb | 19,6 | |
| Capacity 1/20 | | Kg | 8 | |
| | | lb | 17,6 | |
| Ø Drum | | mm | 590 | |
| | | inch | 23,2 | |
| Drum length | | mm | 585 | |
| | | inch | 23 | |
| Drum volume | | l | 160 | |
| | | cu ft | 5,65 | |
| Ø Door hole | | mm | 480 | |
| | | inch | 18,9 | |
| Door center height | | mm | 554 | |
| | | inch | 21,8 | |
| Height from floor to bottom of door | | mm | 250 | |
| | | inch | 9,84 | |
| ELECTRIC HEATING | | | | |
| Evaporation capacity | | L/h | 5,3 | |
| | | US gallon/h | 1,40 | |
| Hourly output | | Kg/h | 10,6 | |
| | | lb/h | 23,37 | |
| Installed heating power | | kW | 4,5 / 6,75 | |
| Installed electrical power | | kW | 4,92 / 7,17 | |
| Drum motor power | | kW | 0,37 (2) | |
| GAS HEATING | | | | |
| Evaporation capacity (gas model) | | L/h | 5,3 | |
| | | US gallon/h | 1,40 | |
| Hourly output (gas model) | | Kg/h | 10,6 | |
| | | lb/h | 23,37 | |
| Installed gas heating power | | kcal/h | 5761 | |
| | | Btu/h | 22861,3 | |
| Installed gas heating power | | kW | 6,70 | |
| Installed electrical power | | kW | 0,42 | |
| Instant propane gas consumption (G31) | | Kg/h | 0,57 | |
| | | lb/h | 1,26 | |
| Instant natural gas consumption (G20) | | m ³ /h | 0,71 | |
| | | cfm | 0,42 | |
| Ø Gas inlet | | BSPP ISO 228-1 | 1/2" | |
| VENTILATION | | | | |
| Fan motor power | | kW | 0,37(2) | |
| Nominal air flow rate | | m ³ /h | 300 | |
| | | cfm | 177 | |
| Ø Fume exhaust | | mm | 100 | |
| | | inch | 3,94 | |
| HEAT EMISSION | | | | |
| Maximum total heat emission | | kW | 0,5 | |
| | | Btu/h | 1536 | |
| Max. front heat emission | | kW | 0,3 | |
| | | Btu/h | 1075 | |
| CONNECTIONS | | | | |
| Tension 230V - I + N + T | | Nº x mm ² / A | E 3 x 10 / 40A | G 3 x 1,5 / 10A |
| Tension 230V - III + T | | Nº x mm ² / A | 4 x 4 / 25A | 3 x 1,5 / 10A (3*) |
| Tension 400V - III + N + T | | Nº x mm ² / A | 5 x 2,5 / 16A | 3 x 1,5 / 10A (4*) |
| NET DIMENSIONS / D. WITH PACKING | | | | |
| Net / gross width | | mm | 680 / 710 | |
| | | inch | 26,8 / 28 | |

| | | |
|--------------------|------|---------------|
| Net / gross depth | mm | 722 / 832 |
| | inch | 28,4 / 32,8 |
| Net / gross height | mm | 1.056 / 1.141 |
| | inch | 41,6 / 44,9 |
| Net / gross weight | Kg | 89 / 108 |
| | lb | 196 / 237 |
| OTHERS | | |
| Sound level | dB | 62 |

- (1) Configurable via a terminal block system.
- (2) It's a single motor for both the drum and fan.
- (3*) Connect two phases and ground.
- (4*) Connect phase, neutral, and ground.



- 01 Power supply
- 02 Fumes output Ø 100
- 03 Gas inlet 1/2"
- 04 Ethernet connection (only TOUCH control)

| | A | B | C | D | E | F | G | H | I | J | K | L | M | N |
|--------|-------|-------|-----|-----|-----|-----|-----|-----|----|----|-----|-------|----|-----|
| HPD-8 | 1.056 | 1.227 | 320 | 140 | 226 | 680 | 722 | 615 | 57 | 91 | 480 | 1.015 | 50 | 118 |
| HPD-10 | 1.056 | 1.227 | 320 | 140 | 226 | 680 | 775 | 615 | 57 | 91 | 480 | 1.015 | 50 | 118 |