

ELECTRONIC PROGRAMMER

M programmer: push buttons to control temperature and time.

OUTSTANDING FEATURES

Reversing drum action as standard.
Stainless steel drum as standard.
Frequency inverter as standard.

EFFICIENCY

DOUBLE FLOW - mixed axial-radial airflow.
Big fluff filter.

VERSATILITY

Make to order - Customisation
OPL > Self-service - Standard OPL model easily trasformable to coin laundry uses.

ERGONOMICS

Drawer as fluff filter, stainless steel mesh.
Biggest door diameters.

MAINTENANCE

Hinged control panel: easy and ergonomic access.
Technical menu: statistics for technicians and maintenance with external console (with console option).

OTHERS

Grey skinplate outer casing, stainless steel look.
SOFT DRY - new drum with stamped holes.
COOL DOWN - anti-wrinkle at the end of the cycle.
Heating options: electric or gas, except DTM2-22 only gas.
CE approved

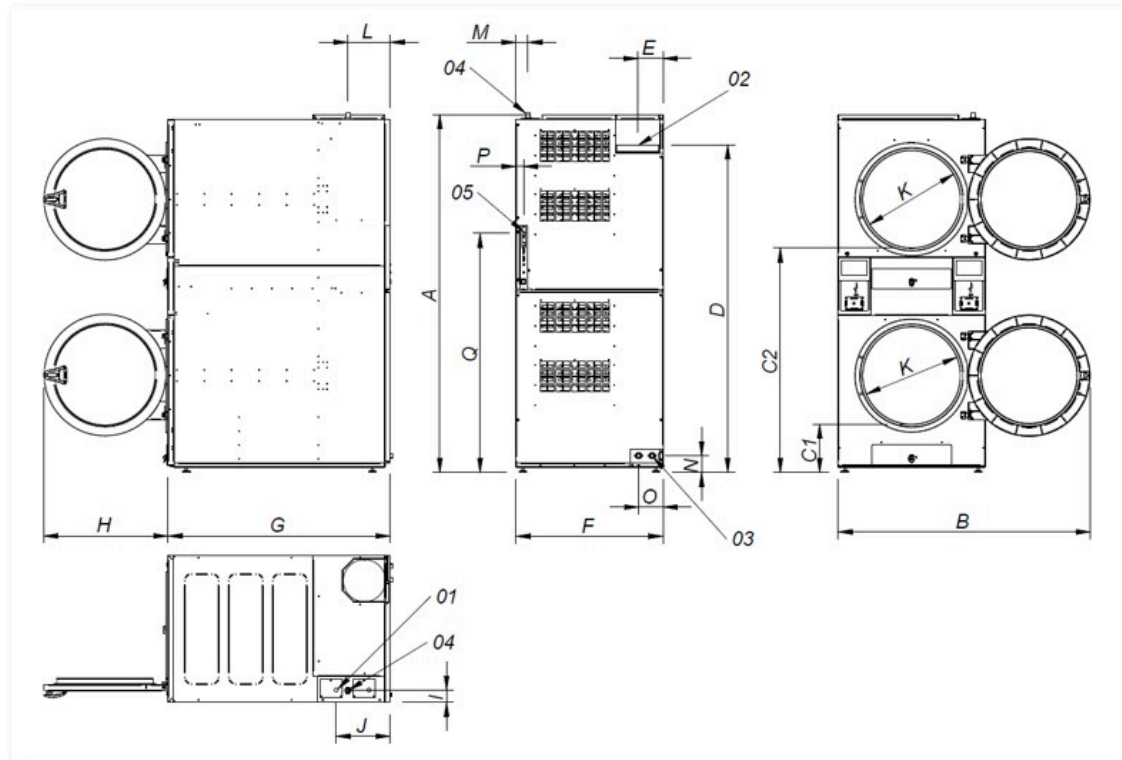


OPTIONS

- Natural gas heated tumble dryer
- Double doorglass (order 1 unit per column)
- Screen in M programmer (2 units)
- Fluff filter with grid 0,3 mm (standard in STACK is 0,6 mm)
- Stainless steel front and side panels DTM2-22
- Front panel in stainless steel DTM2-22
- Maritime wooden packing DTM2-22
- 400V III 60Hz 11/14/18/22kg
- 440V/480V III 60Hz 11/14/18/22kg (maritime)
- Several payment systems for self-service

CAPACITY & DRUM		UNIT.	DTM2-22
Capacity 1/18		Kg	24,3 x2
		lb	53,6 x2
Capacity 1/20		Kg	21,9 x2
		lb	48,3 x2
Ø Drum		mm	835
		inch	32,87
Drum length		mm	800
		inch	31,50
Drum volume		l	440
		cu ft	15,54
Ø Door hole		mm	575
		inch	22,64
Door center height		mm	547 / 1.618
		inch	22,60 / 63,70
Height from floor to bottom of door		mm	286 / 1.330
		inch	11,26 / 52,36
ELECTRIC HEATING			
Evaporation capacity		L/h	-
		US gallon/h	-
Hourly output		Kg/h	-
		lb/h	-
Installed heating power		kW	-
Installed electrical power		kW	-
Drum motor power		kW	0,37 x2
GAS HEATING			
Evaporation capacity (gas model)		L/h	44 x2
		US gallon/h	11,624 x2
Hourly output (gas model)		Kg/h	88 x2
		lb/h	194 x2
Installed gas heating power		kcal/h	26139 x2
		Btu/h	103658,5 x2
Installed gas heating power		kW	30,4 x2
Installed electrical power		kW	1,94
Instant propane gas consumption (G31)		Kg/h	2,61 x2
		lb/h	5,75 x2
Instant natural gas consumption (G20)		m ³ /h	3,22 x2
		cfm	1,89 x2
Ø Gas inlet		BSPP ISO 228-1	3/4"
VENTILATION			
Fan motor power		kW	0,55 x2
Nominal air flow rate		m ³ /h	900 x2
		cfm	529,72 x2
Ø Fume exhaust		mm	250 x2
		inch	9,84 x2
HEAT EMISSION			
Maximum total heat emission		kW	2,6
		Btu/h	8876,8
Max. front heat emission		kW	1,9
		Btu/h	6486,9
CONNECTIONS		E	G / S
Tension 230V - I + N + T	Nº x mm ² / A	-	3 x 2,5 / 20A
Tension 230V - III + T	Nº x mm ² / A	-	3 x 2,5 / 20A (1*)
Tension 400V - III + N + T	Nº x mm ² / A	-	3 x 2,5 / 20A (2*)
NET DIMENSIONS / D. WITH PACKING			
Net / gross width		mm	870 / 950
		inch	34,25 / 37,40

Net / gross depth	mm	1.312 / 1.395
	inch	51,65 / 54,92
Net / gross height	mm	2.118 / 2.250
	inch	83,39 / 88,58
Net / gross weight	Kg	373,5 / 388,5
	lb	823,43 / 856,50
OTHERS		
Sound level	dB	69



- 01 Power supply
- 02 Fumes output Ø 250
- 03 2 sprinkler valves 3/4"
- 04 Gas inlet 3/4"
- 05 Ethernet connection (only TOUCH control)

	A	B	C1	C2	D	E	F	G	H	I	J	K	L	M	N	O	P	Q
DTM2-22	2.118	1.490	286	1.330	1.940	149	870	1.312	735	73	320	575	250	70	100	145	45	1.416