



TOUCH II

- TOUCH II: Easy-to-use microprocessor, fully programmable with a 7" touchscreen.
- USB port: configure, update, and analyse machines without internet connection.
- On-screen videos: add your logo, video advertisements or instructions for use (useful for self-service).
- Multilingual interface.
- 8 standard dosing signals and 6 extra as an option.



G FACTOR

High G-factor of 500 (11-18 kg), 450 (22-80 kg), and 350 (100-120 C).
Reduces residual moisture



EFFICIENCY

Optimal loading: manual indication of weight.
Intelligent consumption: automatic adjustment of water and soap consumptions (standard).
Water Recovery tanks ready: **ECOTANK** and **ECOTANK XL**.
Low water consumption.



VERSATILITY

Make to order: customisation.
OPL < > COIN (mod. DHS-11 up to DHS-45C).
Electric < > Hot water.
Drain valve < > Pump (DHS-11/14).
Wet Cleaning features.



CONNECTIVITY

IoT - **DOMUSCONNECT** standard.
Remote technical service.
Management for laundries: OPL and COIN.
Remote payment DOMUS LAUNDRY App (mod. DHS-11 up to DHS-45C).



ERGONOMICS

Easy opening/closing system for door lock.
Biggest door diameters:

- Ø 373 (11, 14 kg)
- Ø 460 (18, 22, 28 kg)
- Ø 560 (35, 45, 60, 80 kg)
- Ø 700 (100, 120 kg)



MAINTENANCE

Hinged control panel: easy and ergonomic access.
Technical menu: statistics for technicians.



OTHERS

Grey skinplate outer casing.
Drum and vat in stainless steel AISI 304.
Detergent dispenser with 4 compartments.
Electronic control of imbalance with frequency control.
LOADING AID feature: water and rotation control.
Soft mounted washers, free standing.
CB and WRAS approved product. Option ETL.
REG4 standard certified by KIWA.

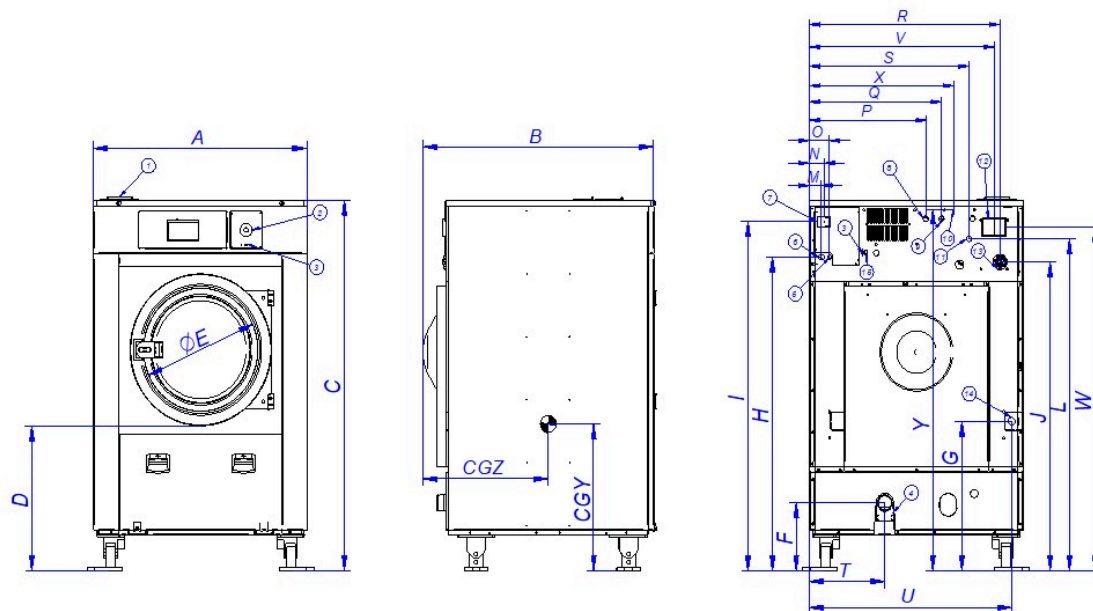


OPTIONS

- DOMUS LAUNDRY App - Self service
- License IoT - DOMUSCONNECT
- Ready for ECOTANK XL conn. 1" for washers DLS/DHS-35C/45C
- DOSING PUMP KIT DQ-2
- EXTRA DOSING PUMP DB-1
- Double drain kit for DHS-35C/45C
- Normally closed valve DHS-35C
- WATER RE-CYCLE: recirculation of bath water DHS-35C/45C. Not with ECOTANK
- Weighing sensor system on feet for DHS-11 to DHS-45C. Includes kit 6 extra dosing signals
- 6 extra dosing signals card for DHS-11 to DHS-45C. Total of 14 signals
- Reversible door: reverse door opening
- Tropicalized model: protected board for DHS-11 - 45C / DLS-11 - 80C
- Steam kit DHS-28/35C/45C
- Stainless steel AISI 304 outer casing for DHS-35C
- Stainless steel AISI 304 front and top panel for DHS-35C
- 440V 3~ (No N) 50/60 Hz DHS-35C (marine)
- 230V 3~ 50/60Hz DHS-35C
- Kit watermark Australia
- Several payment systems for self-service
- Auto unlock kit for the door (in case of power failure) DLS-DHS

| DRUM | UNIT. | DHS-35C TOUCH II | |
|---|--------------|------------------|---------------|
| Capacity 1/9 | Kg | 39 | |
| Capacity 1/10 | Kg | 35 | |
| Volume | l | 350 | |
| Diameter | mm | 860 | |
| Depth | mm | 602 | |
| GENERAL DETAILS | | | |
| Washing speed / Spining speed | r.p.m. | 42,5 / 966 | |
| G Factor | - | 450 | |
| Maximum force transmitted | KN | 7,36 ±2,45 | |
| Frequency-dynamic force | Hz | 14,3 | |
| Noise level | dB | < 70 | |
| Coin laundry version | - | SI | |
| Double drain | - | OPT. | |
| Weighing system / Tilting door | - | OPT. | |
| SLUICE option | - | NO | |
| DOOR | | | |
| Height center door / Height door | mm | 1.000/640 | |
| Diameter | mm | 560 | |
| POWER | | | |
| Motor | kW | 6 | |
| Electric heating power | kW | 21 | |
| Total electric power (electric model) | kW | 22 | |
| Total electric power (hw, steam model) | kW | 6 | |
| CONNECTIONS | | E | HW/S |
| Tension 110V - I + N + T | Nº x mm² / A | - | - |
| Tension 230V - I + N + T | Nº x mm² / A | - | - |
| Tension 230V - III + T | Nº x mm² / A | 3x16+T - 63A | 3x4+T - 32A |
| Tension 400V - III + N + T | Nº x mm² / A | 4x6+T - 40A | 4x1,5+T - 16A |
| Steam inlet (Steam model) | inch | 3/4" | |
| Maximum steam consumption (Steam model) | Kg/h | 18 | |
| Water inlet | inch | 3/4" | |
| Water main pressuer | Kgs/cm² | 2-4 | |
| Maximum water consumption* | Lit/h | 261,3* | |
| Air inlet | Kg/cm² | - | |
| Drain | mm/inch | 3" | |
| Drainage capacity | Lit/min | 200 | |
| DIMENSIONS / PACKING DIMENSIONS | | | |
| Net Width/Gross width | mm | 1.095 / 1.205 | |
| Net Depth/Gross depth | mm | 1.184 / 1.330 | |
| Net Height / Gross height | mm | 1.730 / 1.850 | |
| Net weight / Gross weight | kg | 735 / 786 | |
| Volume | m³ | 2,7 | |

* Program No. 20: DHS-11 to DHS-45C with 75% load and program no. 2: DHS-60C and DHS-80C with 100% load



1. Soap dispenser
2. Emergency stop
3. USB port
4. Drain
5. Electric connection to liquid soap pumps
6. Electrical connection
7. Main switch
8. Auxiliar water inlet
9. Hot water inlet
10. Equipotential connection
11. Cold water inlet
12. Blur output / Water overload
13. Liquid soap connection
14. Steam connection
15. Ethernet port

| | | A | B | C | D | E | F | G | H | I | J | K | L | M | N | O | P | Q | R | S | T | U | V | W | X | Y | CGY | CGZ |
|---------|----|------|------|------|-----|-----|-----|-----|------|------|------|------|------|----|----|-----|-----|-----|-----|-----|-----|------|-----|------|-----|------|-----|-----|
| DHS-35C | mm | 1095 | 1184 | 1767 | 640 | 560 | 328 | 712 | 1500 | 1668 | 1501 | 1683 | 1587 | 61 | 74 | 101 | 596 | 676 | 976 | 808 | 384 | 1037 | 946 | 1637 | 740 | 1723 | 795 | 732 |
| DHS-45C | mm | 1095 | 1304 | 1767 | 640 | 560 | 328 | 712 | 1500 | 1668 | 1501 | 1683 | 1587 | 61 | 74 | 101 | 596 | 676 | 976 | 808 | 384 | 1037 | 946 | 1637 | 740 | 1723 | 795 | 800 |