



VERSATILITY

OPL <> COIN: Standard models can be programmed as OPL or coin laundry version, central pay, etc.
 SINGLE <> STACKED: Models can be stacked on top of a washer or on another dryer.
 Control panels can be assembled between both drums for better ergonomics.
 Ideal for multiple solutions: hotels, hostels, campings, coin laundries, facility services (mops), gyms, etc.
 New gas heated models.



OUTSTANDING FEATURES

M PROGRAMMER: selection of time and temperature, user friendly and versatile (OPL or coin laundry version).
 Reduced drying times (less than 45 minutes).
 Electric heating only 4,5 kW.



EFFICIENCY

Optimised airflow.
 Wide fluff filter as drawer.
 Efficient design.



ROBUSTNESS

White lacquered in HPDL model.
 Robust aluminium big door.
 Drawer as fluff filter (not in the door but as a specific drawer).
 Industrial fan and powerful airflow.
 Sturdy construction of the dryer structure and panels.



OTHERS

Galvanized drum.
 Models with electric or gas heating.
 FULL SCREEN FILTER: drawer fluff filter, not in the door.
 Models with electric or gas heating.
 HPDL model available in two versions: three-phase model or single-phase model (non-convertible).



OPTIONS

- 400V III / 230 I / III 60 Hz No HPI
- 440-480V 3~ 60 Hz (marine)
- Several payment systems for self-service

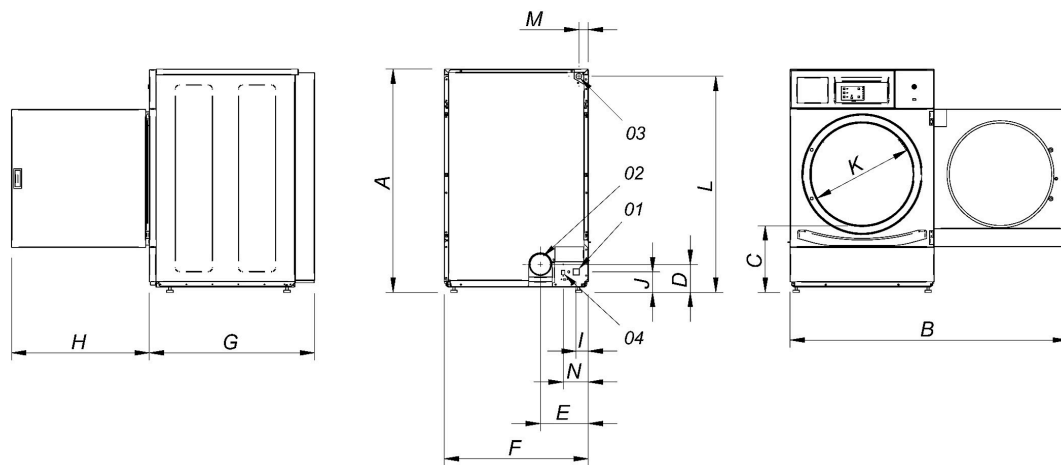
CAPACITY & DRUM	UNIT.	HPDL-10 M E TRIF
Capacity 1/18	Kg	11,1
	lb	24,5
Capacity 1/20	Kg	10
	lb	22
Ø Drum	mm	590
	inch	23,2
Drum length	mm	690
	inch	27,2
Drum volume	l	200
	cu ft	7,06
Ø Door hole	mm	480
	inch	18,9
Door center height	mm	554
	inch	21,8
Height from floor to bottom of door	mm	250
	inch	9,84
ELECTRIC HEATING		
Evaporation capacity	L/h	6,35
	US gallon/h	1,68
Hourly output	Kg/h	12,5
	lb/h	27,56
Installed heating power	kW	4,5 (1)
Installed electrical power	kW	4,92 (1)
Drum motor power	kW	0,37 (2)
GAS HEATING		
VENTILATION		
Fan motor power	kW	0,37(2)
Nominal air flow rate	m³/h	300
	cfm	177
Ø Fume exhaust	mm	100
	inch	3,94
HEAT EMISSION		
Maximum total heat emission	kW	0,5
	Btu/h	1536
Max. front heat emission	kW	0,3
	Btu/h	1075
CONNECTIONS		
Tension 230V - I + N + T	Nº x mm² / A	3 x 10 / 40A
Tension 230V - III + T	Nº x mm² / A	4 x 4 / 25A
Tension 400V - III + N + T	Nº x mm² / A	5 x 2,5 / 16A
NET DIMENSIONS / D. WITH PACKING		
Net / gross width	mm	680 / 710
	inch	26,8 / 28
Net / gross depth	mm	775 / 832
	inch	30,5 / 32,8
Net / gross height	mm	1.056 / 1.141
	inch	41,6 / 44,9
Net / gross weight	Kg	93 / 111
	lb	204 / 245
OTHERS		
Sound level	dB	62

(1) Configurable by means of a terminal system.

(2) It is a single motor for drum and fan.

(3) Connecting 2 phases and ground

(4) Connecting phase, neutral and ground



- 01 Power supply
- 02 Fumes output Ø 100
- 03 Gas inlet 1/2"
- 04 Ethernet connection (only TOUCH control)

	A	B	C	D	E	F	G	H	I	J	K	L	M	N
HPDL-10 M E TRIF	1.056	1.227	320	140	226	680	775	615	57	91	480	1.015	50	118